

 **InterPlate™**
MODULAR FUSION TECHNOLOGY

MODULAR IMPLANTS FOR CERVICAL & LUMBAR FUSION



TITANIUM + BONE

TITANIUM + PEEK-OPTIMA®†

ALL PEEK-OPTIMA®

† Refers to C-Ti only

MODULAR MECHANICAL LOADING

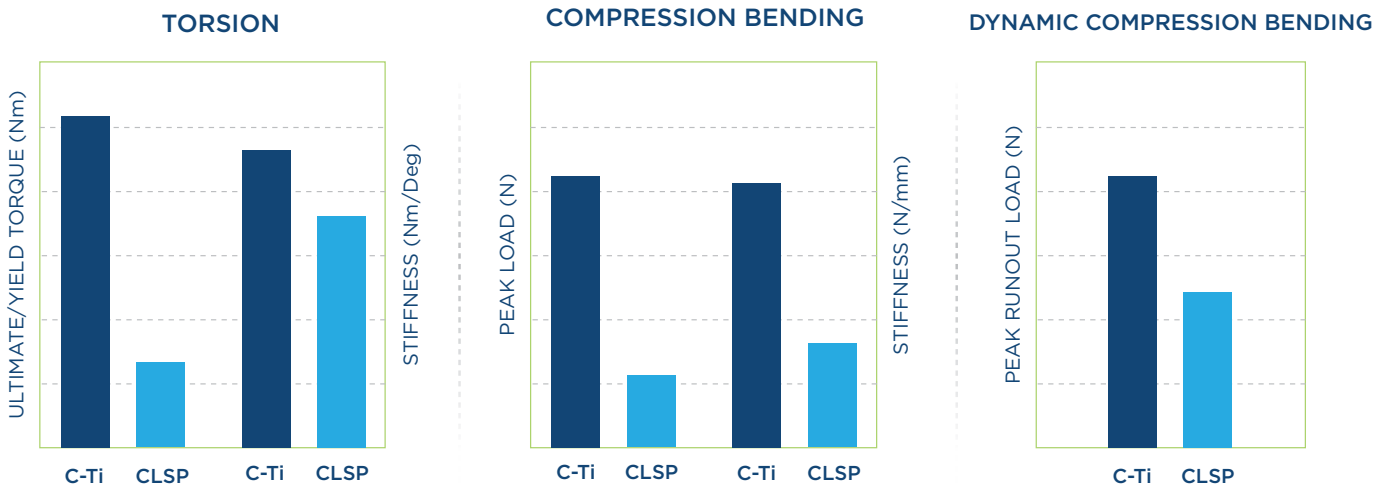
Patented Teeth & Slot Design

- ▶ Permit 1.8 mm of Immediate Graft Loading
- ▶ Implant Teeth provide +>50% more stability††



†† Buttermann et. al. SPINE vol. 9 (2009), 564-573

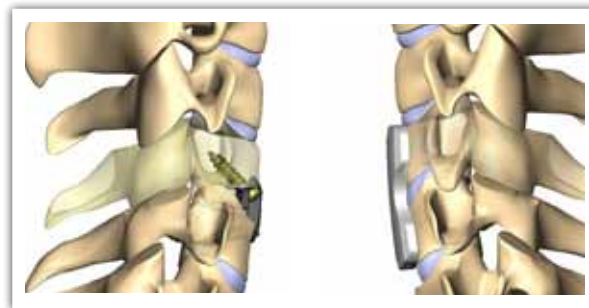
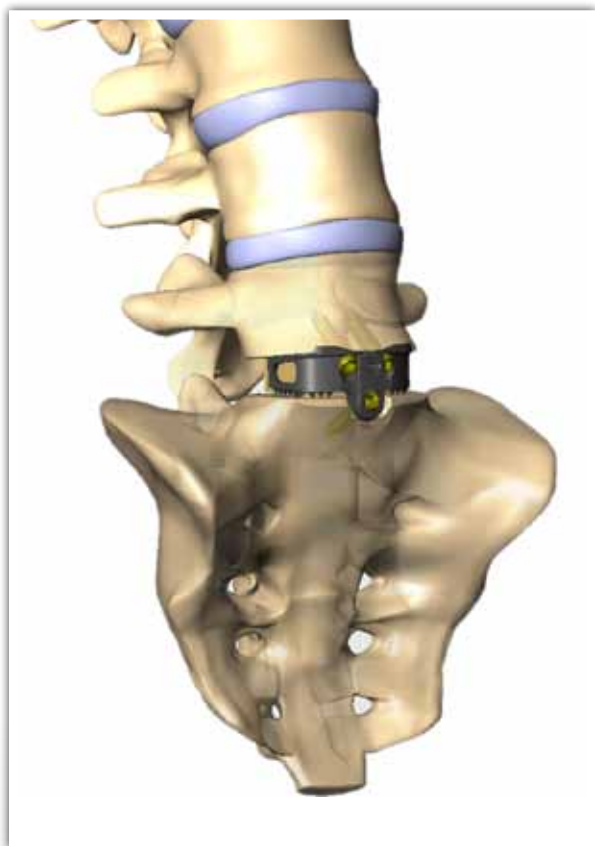
BIOMECHANICAL TESTING



InterPlate C-Ti versus Anterior Cervical Plates

Your material. Your mechanical loading preference... Your patient.

BRIDGING FLUSH-FIT™ PROFILE



SURGICAL SITE PREP COMPARISON

InterPlate®

Cervical Plates



Vs.



INCISION COMPARISON

(screw trajectory)

InterPlate®

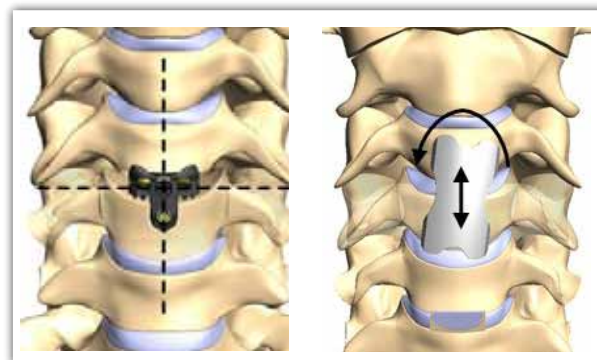
Zero-P™



Less Retraction

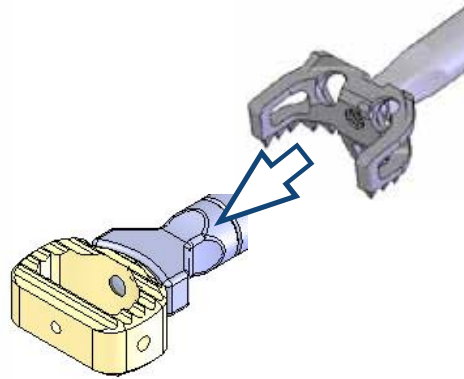
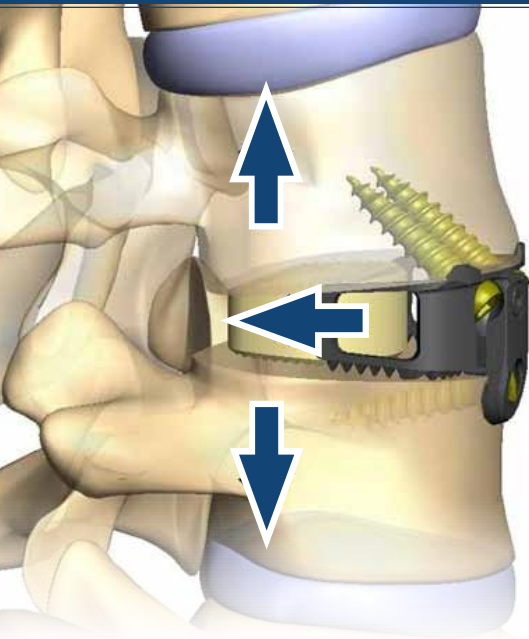


More Retraction



- ▶ Reduce Dysphasia Risk Factors
- ▶ Reduce Vascular Risk Factors

SUPERIOR CORRECTIVE FORCE APPLICATIONS

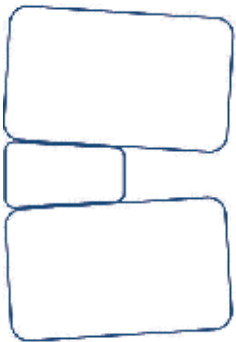


I. TWO-STEP INSERTION

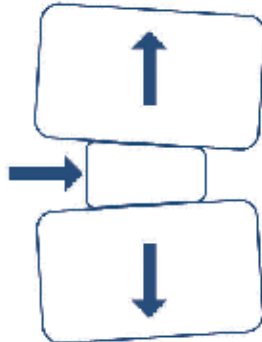


II. ALL-IN-ONE INSERTION

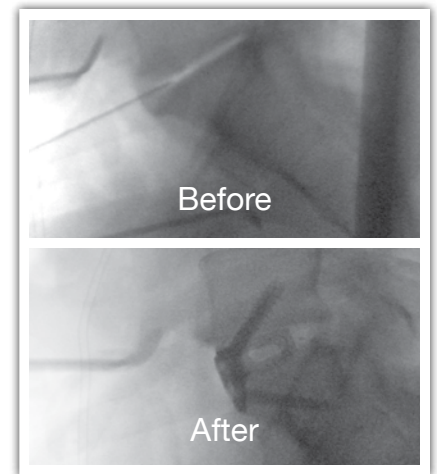
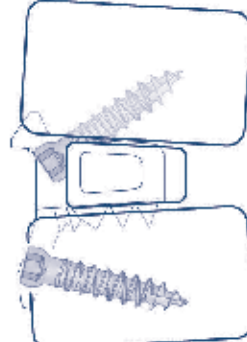
COMPETITIVE DEVICES:
NO OPTION



WITH InterPlate:
COUNTERSINK GRAFT
TO DESIRED DEPTH



InterPlate PROVIDES
FIXATION



 **ParadigmBioDevices**
The Leader in Zero-ProfileSM Technology

800 Hingham St. Ste. 207S Rockland, MA 02370
888-698-7778 www.paradigmbiodevices.com

Refer to package insert for a complete list of warnings, precautions, indications, and contraindications.



PEEK-OPTIMA and Invivo are registered trademarks of Invivo Ltd. All rights are reserved

Interplate is a trademark of RSB Spine
Flush-Fit is a trademark of RSB Spine
Zero-P is a trademark of Synthes Spine
Zero-ProfileSM is a registered service mark
© Paradigm Copyright
US Patent 6,984,234
Other patents pending
Rev. 001